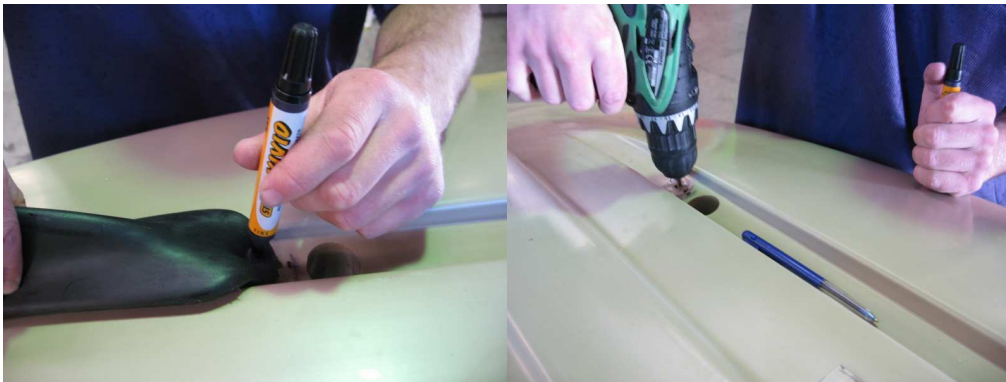


## **SKEG FITTING INSTRUCTIONS FOR CATCH 390 MODEL WITHOUT MOULDED IN T-NUTS.**

- Note:** When attached on the correct sides of the kayak the skegs should lean inwards toward the centre of the boat.
- Step 1:** Mark position of forward holes using pre-drilled skeg as a template. The front edge of the skeg should be approximately 15mm from the rear scupper hole.
- Step 2:** Drill pilot holes on marks using 3-5mm drill bit, followed by 9.5 mm bit to drill the final hole.



- Step 3:** Insert the rubber well nut into the holes drilled and loosely attach skegs using the supplied 5mm bolt and washer (washer between head of screw and skeg).
- Step 4:** Align the skegs so that the inside edge runs parallel to the keel/channel



**Step 5:** Mark the position of the rear hole, again using the skeg as a template.



**Step 6:** Remove skeg, and drill rear hole (first with pilot bit, then with 9.5mm drill bit). Insert well nut into rear hole. Before final attachment of skegs, it is recommended that a marine grade silicone sealant is used in and around the well nuts.



Marine grade  
Silicone

**Step 7:** Screw down skegs firmly, but avoid over tightening the screws as this may jeopardise the performance of the well nuts.

**Kit Contains:**

- 2 Pre-drilled skegs
- 4 Rubber well nuts
- 4 Stainless steel washers
- 4 40x5mm mushroom head #2 Phillips drive screws